



5



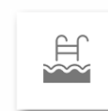
4

566m²1286m²

Ref: DI6695

2,950,000 €

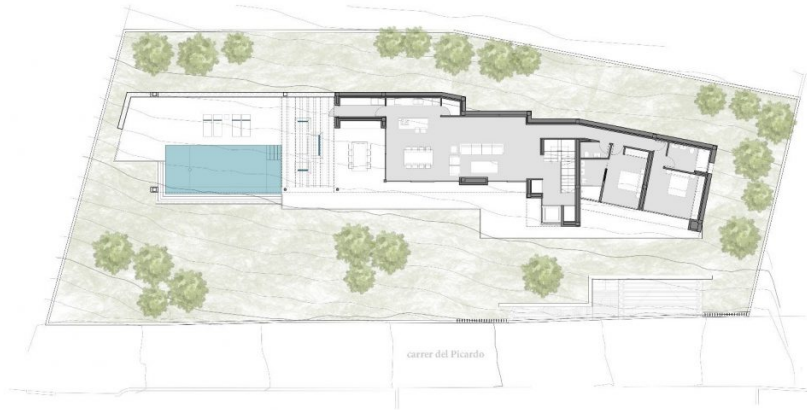
(Javea)



Luxury modern 4 bedroom sea view villa for sale in Javea. Licence obtained so ready to build! This fabulous property is to be built on a unique and privileged location so that the whole house benefits from spectacular views of the sea and Cala Ambolo being close to beach of Granadella. This property is designed for both comfortable year-round living and for irresistible and memorable vacations by the famous architect Pepe Giner. The linear footprint of the house makes excellent use of the plot and comprises the following:

- First level – a spacious living room with feature fireplace, a dining room, open plan fully-fitted high quality kitchen, extra height double glazed windows giving direct access to the terraces, the chill out area and summer kitchen adjacent to the private floodlit pool. Continue on this level to find two beautiful double bedrooms both ensuite.
- On the first floor there is a splendid master bedroom with ensuite bathroom, plus a fourth bedroom also ensuite leading out to a superb open terrace.
- On the ground floor you will enter via a large welcoming entrance hall alongside an extra large double garage and a carport for two cars.
- A panoramic elevator serves all three levels.
- At this stage it is possible to choose from a range of high specification interior and exterior finishes, and the style of the villa is also available in different versions: modern, contemporary and Ibiza.
- Superior quality construction and first class materials will be used throughout, along with high-level equipment in keeping with this stunning home. The garden has been designed with the most beautiful Mediterranean planting to enhance and compliment the property within its landscape.
- Current projects with this constructor are available to view.[IW]

VILLA PIC 50 JÁVEA	
PLANTA SEMISOTANO	
Vivienda	43.39m ²
Garaje	45.58m ²
Gimnasio	30.92m ²
Cuarto Técnico	19.03m ²
Porche acceso	2.86m ²
Porche aparcam.	31.04m ²
Voladizo	5.52m ²
Cuarto depurad.	5.85m ²
PLANTA BAJA	
Vivienda	102.35m ²
Porches	27.72m ²
Voladizos	16.35m ²
PLANTA ALTA	
Vivienda	138.11m ²
Voladizos	13.72m ²
EMPLAZAMIENTO	
Terrazas	82.25m ²



VILLA PIC 50 JÁVEA	
PLANTA SEMISOTANO	
Vivienda	43.39m ²
Garaje	45.58m ²
Gimnasio	30.92m ²
Cuarto Técnico	19.03m ²
Porche acceso	2.86m ²
Porche aparcam.	31.04m ²
Voladizo	5.52m ²
Cuarto depurad.	5.85m ²
PLANTA BAJA	
Vivienda	102.35m ²
Porches	27.72m ²
Voladizos	16.35m ²
PLANTA ALTA	
Vivienda	138.11m ²
Voladizos	13.72m ²
EMPLAZAMIENTO	
Terrazas	82.25m ²

